

Envisioning a Future for Our Mountains

2019 Annual Report



2019

Dear Friends,



As I've thought of this farewell letter to you, I've struggled with its content. Each year, we publish this annual report to share the past year's successes and to thank you for your part in those achievements. But, as I retire from Mainspring, I can't help but think back over all of the last 19 years, even as I look to the future.

When I joined founding director Paul Carlson in 2001, I don't think either of us could have imagined what conservation success would look like today – tens of thousands of acres of forest and farmland with hundreds of miles of streams conserved, generations of people made more aware of the natural world around them, and iconic cultural sites protected.

It has been an incredible journey, but there is so much more to do, especially as environmental laws are relaxed and climate change's devastating impacts are upon us. Yet I still have much hope for this region. Jordan Smith, your new lead partner in conservation, will direct a passionate, devoted staff to continue the critical work of protecting the area's beauty, biodiversity and cultural heritage, even when faced with mounting challenges.

But just as I couldn't do it without you, neither can Jordan. I ask that you continue supporting Mainspring and our collective mission to save this natural place – a wild and beautiful landscape that nourishes our souls and sustains the living world around us.

I say goodbye as executive director with deep, heartfelt appreciation for you. I'm in awe of all that we've done together.

Sincerely,

A handwritten signature in blue ink that reads "Sharon".

Sharon E. Taylor
Executive Director, Retired

Staff

Jordan Smith
Executive Director

Sharon Willard Burdette
Administrative Assistant

Dennis Desmond
Stewardship Coordinator

Teresa Falzone
Finance Associate

Ben Laseter
Deputy Director

Bill McLarney
Senior Scientist

Jason Meador
Aquatic Programs Manager

Kelder Monar
Stewardship Associate

Molly Phillips
Communications Coordinator

Sara Ruth Posey-Davis
Hixwassee Programs Manager

Ramelle Smith
Finance Manager

Board of Directors

Connie Haire
Chair

Jason Love
Vice-Chair

Rita Salain
Treasurer

Chris Brouwer
Secretary

David Adams, Asheville

Bill Gibson, Sylva

Ed Haight, Franklin

Russ Harris, Sylva

Hope Huskey, Sylva

Terrie Kelly, Young Harris, GA

Doug Landwehr, Highlands

Lisa Leatherman, Franklin

Johnny Strawn, Murphy

Ben Steere, Cullowhee

James Stork, Franklin

Emeritus Directors

Patricia Smith Adams

Richard Clark

Dick Heywood

Lydia Sargent Macauley

Ken Murphy

Meet the New Boss

As of March 1, 2020, Mainspring has a new leader. Jordan Smith, the organization’s former land conservation director, has been chosen to lead Mainspring into the new decade as its executive director, following the retirement of Sharon Fouts Taylor.

Raised in western North Carolina, Smith spent much of his youth outdoors. So inspired by natural spaces and the inhabitants within, Smith earned a degree in wildlife management from Auburn University, then went on to work for Brosnan Forest with the Norfolk Southern Corporation in South Carolina. There, he took on a number of roles, including field supervisor of the 16,000-acre working forest.

Returning to the mountains in 2016, Smith joined the team at Mainspring as its land conservation director, managing initiatives of the land acquisition program – including landowner outreach, receiving conservation easements, and land purchases and sales – as well as directing land conservation grant applications and expanding Mainspring’s strategic plan.

Now, as the organization’s third executive director, Smith plans to lead by his predecessor’s example, guiding Mainspring (and all of



western North Carolina) toward a brighter, greener future.

“I certainly have big shoes to fill with Sharon’s absence,” Smith told *The Franklin Press* in February. “A lot of folks ask me what my plan is – what am I going to change? The answer is: Nothing, really. As far as change, the organization is strong, and we have excellent, dedicated staff. To come in and make sweeping changes would be a huge mistake.”

Smith lives in Swain County with his wife, Vanessa and their two daughters. When he’s not busy helping conserve the region’s natural and cultural resources, he can be found spending time outdoors with his family and collecting honey from his beekeeping operation.

Jordan Smith with his wife Vanessa and daughters Julie (left) and Samantha

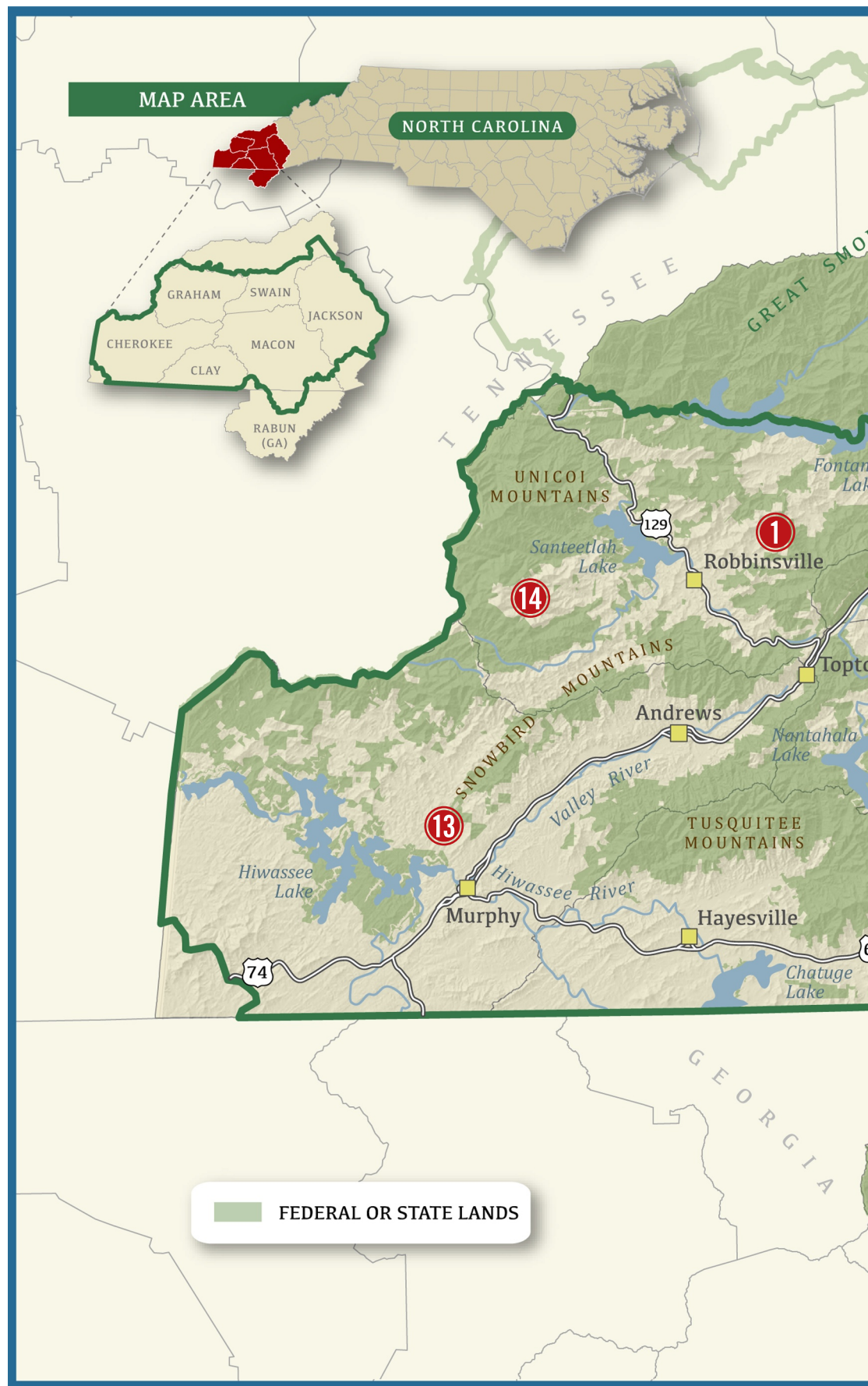
Land Protection by the Year (in acres)

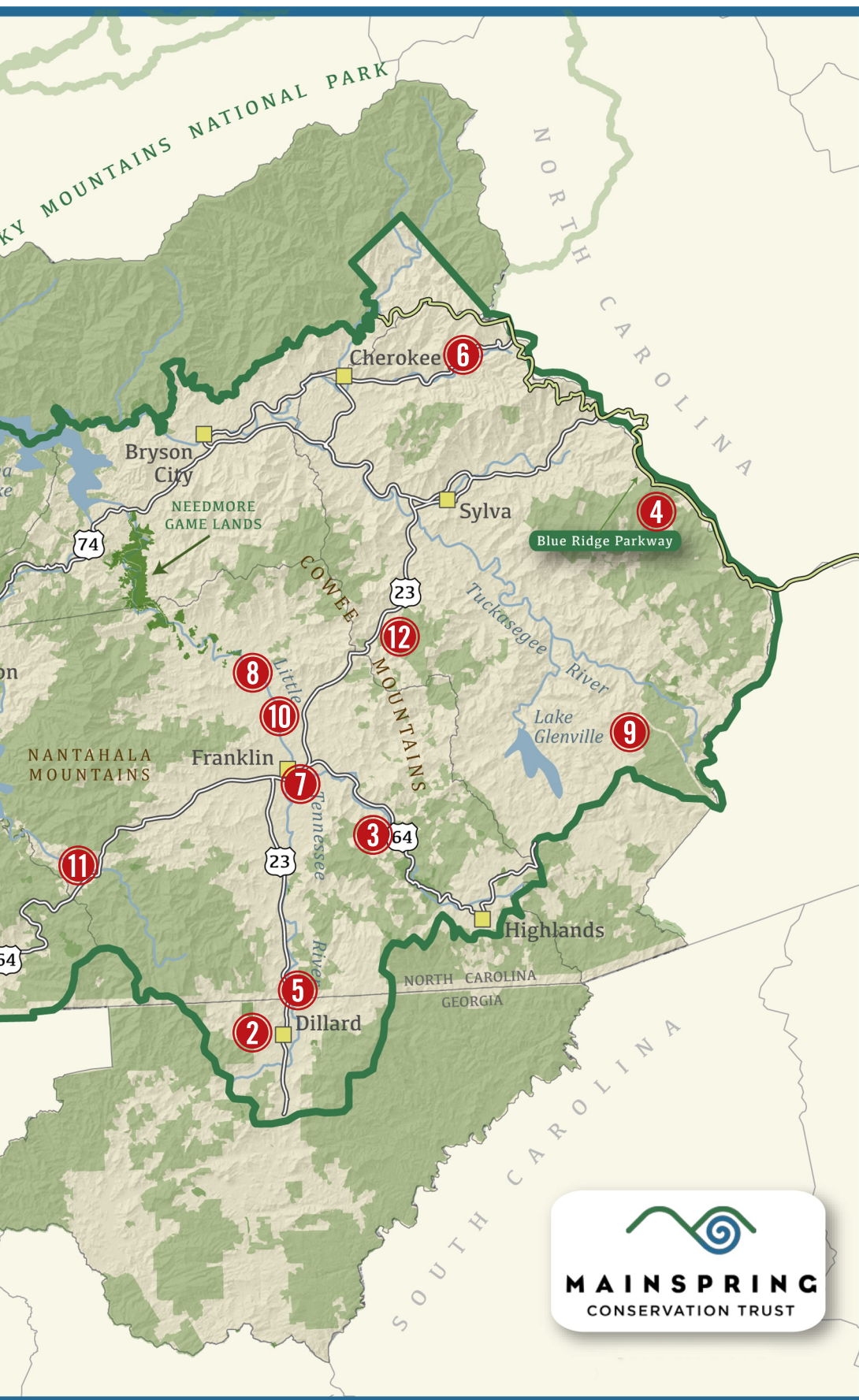


Small Steps, Big Leaps

Mainspring's 2019 LAND CONSERVATION HIGHLIGHTS include projects all around the region — from protecting water quality to preserving scenic views, creating recreational areas to conserving farms and forests.

- 1 Simp Gap:** Mainspring completed this project in April 2019, conserving 504 acres and protecting the view for hikers along the Appalachian Trail. This conservation property will be available for purchase by mid-2020.
- 2 Hopper House Donation:** Long-time supporter Maude Bivins passed away, leaving Mainspring 7.5 acres on Betty's Creek in Rabun County, including a log home built in the late 1840s.
- 3 Buck Creek Donation:** A resident of Cherokee County, Georgia, Kip McVay donated 48 acres in Macon County that she inherited from her parents, Hilda and Birch McVay, to be conserved.
- 4 Mull Creek:** Mainspring purchased 28 acres in Jackson County through a bargain sale. The property contains high quality brook trout habitat.
- 5 Tessentee Bottomland Preserve Addition:** The fourth addition to Mainspring's most popular Macon County preserve, this 42-acre farmland is being leased for cattle and protects the water quality of both the Little Tennessee River and Tessentee Creek.
- 6 Shut-In Creek/Blackrock:** This Jackson County project was completed in partnership with The Conservation Fund. The project conserves a total of 913 acres, with 470 acres transferred to the Eastern Band of Cherokee Indians and 443 acres transferred to the Town of Sylva to expand its Pinnacle Park.





7 Macon County Office Expansion: The purchase of this lot, next to Mainspring's Franklin office, gives us a better place to store equipment for our programs, and marks another major step forward in our commitment to the downtown river district.

8 Baliles Acquisition: Bordering North Carolina's Needmore Game Lands and other Mainspring lands, this Macon County project in the Cowee Mound conservation node protects approximately 1,200 feet of frontage along the Little Tennessee River.

9 Salt Rock Gap: The U.S. Forest Service purchased this property from Mainspring in March 2019. In partnership with the Friends of Panthertown, Mainspring bought the 16-acre property adjacent to Panthertown Valley in 2016 to improve parking at this popular entrance to the Valley.

10 C.N. West General Merchandise: Mainspring sold this property through Preservation North Carolina (PNC) to a private owner, who will refurbish the 1927 general store based on PNC protective covenants that maintain its historic value.

11 Rainbow Springs: See page 8 to learn about this special 205-acre conservation easement, Mainspring's fifth project in this significant natural area.

12 Bo Cove: This was the third conservation easement donated by Jackson County couple George Rector and Joan Byrd, totaling more than 192 acres.

13 Long Farm: An organic Cherokee County farm specializing in heirloom and heritage produce and livestock, these 32 acres owned by Eastern Band of Cherokee Indians member Harold Long and wife Nancy have important cultural heritage values.

14 Bee Knobs: The 104-acre Graham County property is adjacent to Mainspring's King Meadows property and protects the viewshed from Hooper Bald and the Cherochala Skyway.

“Being able to help an organization we love was an opportunity that we decided we wanted to participate in.”

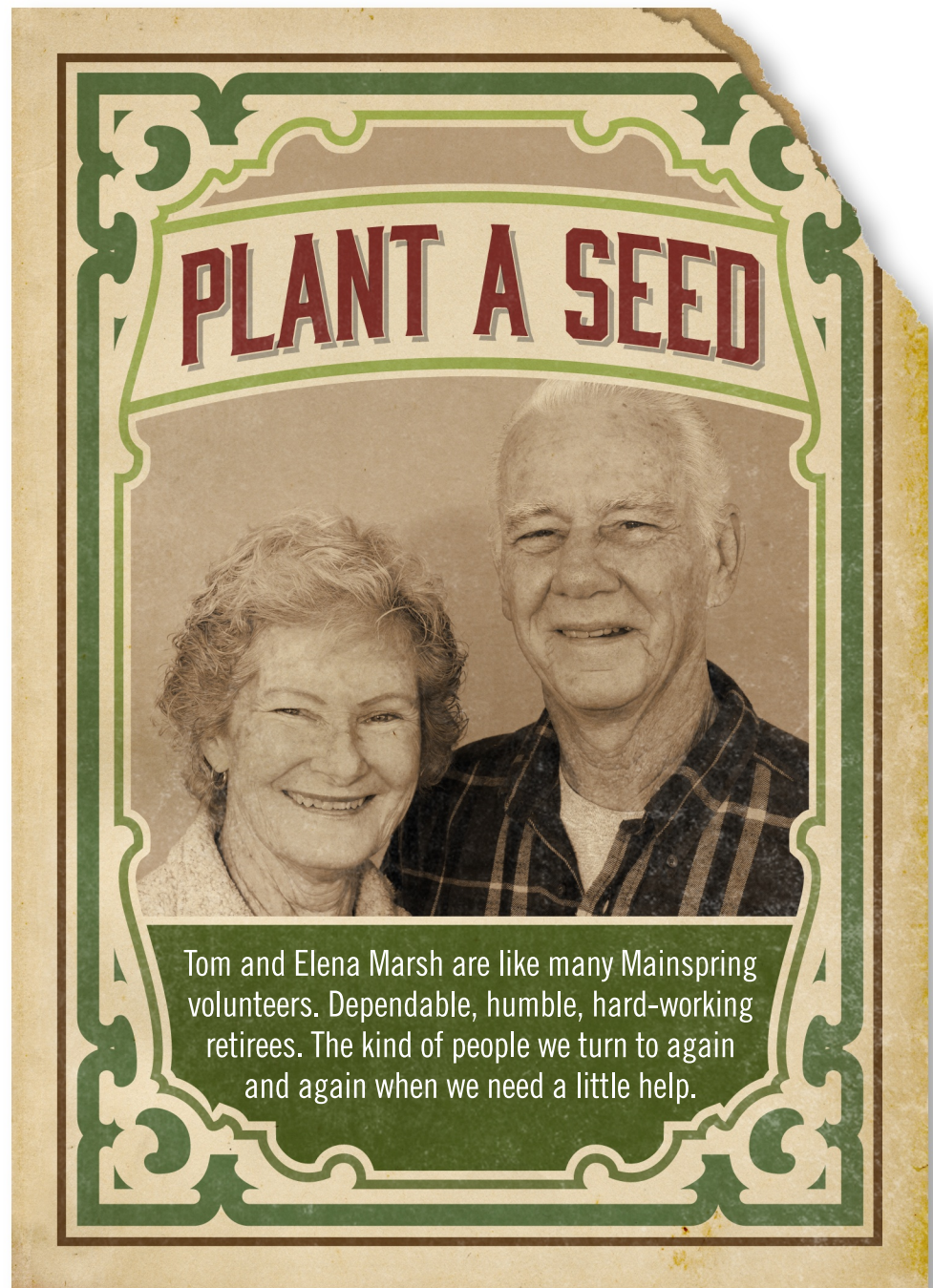


Photo by Fred Alexander

Since they began volunteering in 2012, we’ve always been able to count on their support and generosity – whether through trail maintenance, cleaning out an old house or consistently supporting the annual fund.

In 2019, though, the Marshes took their commitment to a new level, donating their mandatory

annual IRA distribution to help launch the Mainspring Endowment Fund.

Last year, Mainspring’s Board of Directors created the endowment fund to honor retiring director Sharon Fouts Taylor – who, when prompted about a possible retirement gift, only expressed interest in ensuring the long-term

sustainability of Mainspring after her departure. Contributions to endowments are invested and grown over time, while the principal is kept intact — providing a stable, sustainable source of revenue that helps supplement the annual fund.

“Sharon mentioned the endowment fund to us, and the concept felt like a perfect fit for our financial situation,” Elena says. “We live simply and don’t always need the mandatory distribution we’re required to take from our retirement fund. Being able to help an organization we love was an opportunity that we decided we wanted to participate in.”

Mainspring has currently raised more than \$76,000 of its initial cash goal of \$100,000 to build the endowment fund. A current priority is meeting with supporters who have included Mainspring in their estate plans, to determine a plan for their

legacy gift that best honors their wishes.

Elena says she and Tom are glad to have learned so much about this region through their involvement with Mainspring. “It’s been very interesting to be part of planting trees, clearing lands, building trails, working on old homes and other projects that come along,” she says. “It is neat to be with people and talk about a piece of property and mention that we worked on that as volunteers to preserve it. We feel we are doing something good for our community through this organization, and we are happy to be part of the future too.”

If you are interested in speaking with Mainspring about the endowment or a bequest gift through your estate plans, please contact Jordan Smith at jsmith@mainspringconserves.org or 828.524.2711.

About the Mainspring Endowment

At this special time in Mainspring’s history, a time of celebration for the legacy of retiring Executive Director Sharon Fouts Taylor, a time of unprecedented challenges for the Southern Blue Ridge, and a time when we all look with hope toward a sustainable future, we have established the Mainspring Endowment Fund.

An endowment fund is an investment fund set up by an organization in which withdrawals from the interest upon invested capital are used for ongoing operations or other specified purposes. Interest income may be used annually or rolled over to the next year.

Mainspring’s establishment of an endowment fund demonstrates its commitment to long-term sustainability and conservation in perpetuity. Please contact us to learn how you can join us in this journey.



**MAINSPRING
ENDOWMENT**
In Honor of Sharon Fouts Taylor

Mainspring has chosen to partner with the Community Foundation of Western North Carolina to invest and steward this fund.



Over the Rainbow

ON A BRISK DECEMBER 31 AFTERNOON, while many were busy planning their New Year's Eve celebrations, the staff at Mainspring converged at an attorney's office to close on the final conservation easement of 2019 – permanently protecting 205 acres in the Rainbow Springs area of western Macon County.

Part of a larger node of privately conserved properties, this latest project joins a tract of 2,619 total acres near or bounded by the Nantahala National Forest, including four other conservation easements held by Mainspring and one held by The Nature Conservancy.

"The Rainbow Springs Partnership began with a group of friends who purchased 2,200 acres in the upper reaches of the Nantahala River Valley in the late

1940s," explains Charlie Owen, current partner and Fletcher resident. "In the early 1980s, members wanted to protect the legacy of the first-generation members, so they placed a conservation easement on approximately 1,900 acres. In 2019, the current shareholders – comprising several third-generation members, as well as four former members of the Board of Directors of the The Nature Conservancy of North Carolina – made the decision

to protect an additional 205 acres upriver from the current easement.”

Approximately 85% of the newly conserved property is within the viewshed of the Appalachian Trail and can be viewed from the Waterfall

Byway and surrounding Nantahala National Forest lands. It has abundant aquatic resources and riparian habitat, and includes more than a mile of Nantahala River

(continued on next page)



Mole Salamander
Ambystoma talpoideum



Appalachian Violet
Viola walteri appalachiensis



Golden-winged Warbler
Vermivora chrysoptera



Canada Reed Grass
Calamagrostis canadensis



Jack-in-the-pulpit
Arisaema triphyllum



Red-legged Salamander
Plethodon shermani



Red Oak
Quercus rubra



Holy Grass
Hierochloe odorata

The Biological Treasures of Rainbow Springs Marsh

Perhaps the most significant natural community found in Rainbow Springs, Rainbow Springs Marsh is a complex of three separate wetland areas totaling more than 53 acres. The areas include marshes, shrub thickets and swamps, and provide important habitat for wetland-dependent wildlife and a number of rare animals, particularly amphibians and birds.

Rainbow

(continued from previous page)
frontage. Upstream of the river's public section, which provides recreation opportunities and economic benefit to both Swain and Macon counties, this project further protects these pristine waters, classified as Outstanding Resource Waters by the N.C. Department of Environmental Quality.

Also within the property's boundaries lies the Rainbow Springs Marsh, which holds important federal significance. The marsh is part of a bog wetland so unique that it is included in the Mountain Bogs National Wildlife Refuge, one of approximately 30 areas in western North Carolina and northeast Tennessee that the U.S. Fish and Wildlife designated as the Firescald Conservation Partnership Area in 2015.

Jordan Smith, who led the project for Mainspring, says it is unusual to work with a group of members who have conserved land for more than seven decades. "The Rainbow Springs area is one of the most ecologically significant and diverse areas within Mainspring's entire region," he explains. "We are proud to have worked with the Rainbow Springs Hunting and Fishing Club to protect the only remaining tract within their ownership that was not already

permanently conserved. I am thrilled Mainspring was able to complete this important project."

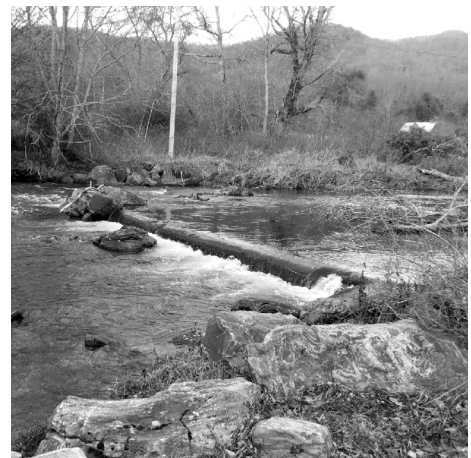
Charlie Owen says working with a local land trust with responsive staff was a motivating factor for the members of Rainbow Springs. "All of us recognized the importance of the biological diversity of the property and the need to protect this resource for future generations. Mainspring has been a great partner in making this possible."

Did you know?

Rainbow Springs is located at the southern end of the Nantahala Mountains Macrosite, a 130,300-acre Significant Natural Heritage Area documented by the N.C. Natural Heritage Program. The macrosite is geologically diverse, and the rugged terrain and high elevations have allowed for the preservation of an extensive forested landscape with numerous forest community types. The macrosite also contains 22 designated terrestrial natural areas and two aquatic habitats. It harbors numerous rare species of plants and animals, including many that are locally common but quite rare throughout the region.

"The Rainbow Springs area is one of the most ecologically significant and diverse areas within Mainspring's entire region."

Jordan Smith



Proving the Power of Partnership

The Little Tennessee River becomes the nation's first designated Native Fish Conservation Area

A partnership can improve the scope and strength of any nonprofit, and collaborating with conservation partners has long been a strategy for Mainspring. Working with others who share a like-minded vision helps maximize our impact and expands our capacity to teach others about the natural resources in the Southern Blue Ridge.

One such partnership, between Mainspring and the Eastern Band of Cherokee Indians (EBCI), sprouted in 2004, when Mainspring began sharing raw materials grown on its properties with Cherokee artisans, who used these materials to craft beautiful, handwoven baskets. This relationship has since expanded into many other areas, including education, conservation and restoration programs.

For the past four years, EBCI and Mainspring have connected through the Native Fish Conservation Partnership, working with a large group of agencies, nonprofits and coalitions to help name the Little Tennessee River watershed the nation's first designated Native Fish Conservation Area (NFCA). NFCAs are watersheds that are managed for the conservation and restoration of native fish and other aquatic species.

"We joined with EBCI Natural Resources to get grant funding for snorkeling gear, which is how our snorkeling program got started,"

(continued on next page)



Partners

(continued from previous page)
says Jason Meador, Mainspring education manager. “Since then, we’ve coordinated with them to share equipment and help each other with other education programs, like fish weir reenactments, Kids in the Creek and 2nd Grade Earth Day.”

Mike LaVoie, manager of the EBCI Natural Resource Department, says Mainspring has been an invaluable conservation partner to the EBCI for many years. “Mainspring’s willingness to partner and assist our department with a variety of aquatic outreach projects has greatly expanded our capacity to deliver education services to the Cherokee community,” he says.

Conserving the aquatic

organisms found in the Little Tennessee watershed is a big priority for the EBCI — and, LaVoie says, the success of that goal heavily relies on communicating the importance of a clean river to its surrounding communities. Clean rivers, he continues, are intricately tied to the cultural, economic and recreational values that support both Tribal citizens and the community at large, and Mainspring has been a great help in getting the word out about the (often unseen) benefits of these natural spaces. “Their staff brings a unique and highly specialized base of knowledge about our native aquatic ecosystems, as well as the enthusiasm to ensure our audience leaves with a greater sense of

Top left: Kids sort through a water sample, looking for aquatic insects.

Top right: A student examines a river redhorse (Moxostoma carinatum), once an important food source for the Cherokee.

Bottom: Students from the Eastern Band of Cherokee Indians use kicknets to examine aquatic life.



responsibility and education,” LaVoie explains, adding that Meador, in particular, provides immense value through his unique perspective to aquatic biology.

Likewise, Meador says working with the EBCI is one of the most

rewarding aspects of his career. “It’s all about promoting clean water and taking care of our land,” he says. “To be able to work with a community whose ancestors respected those values — arguably more than any other culture — is very special.”

New Decade, New Challenges, New Staff

For Mainspring, 2020 marks a year of change. In addition to Jordan Smith’s promotion to executive director, other staff changes and additions have been made, designed to carry us forward into the new decade.

Sara Ruth Posey-Davis, former Hiwassee Programs Manager, has been promoted to Land Conservation Manager, the position formerly held by Smith. A native of Cherokee County, Posey-Davis is excited to focus exclusively on land protection in her new position. “Working on conservation project management in the Hiwassee was the part of the job I was drawn to the most,” she says. “I’m looking forward to exploring Mainspring’s entire coverage area and working

with communities to conserve their special places, while still helping in my home county.”

In February, Mainspring added a new staff member, hiring Teresa Falzone as a part-time Finance Associate. A native of Massachusetts, Falzone has lived in North Carolina since 2010 and has volunteered in Asheville as a Read 2 Succeed tutor at FROGS, and at Mainspring’s Rickman Store. A graduate of Stonehill College and Boston University, she has more than 25 years of experience in financial administration, making her a great fit for Mainspring’s needs. Teresa lives in Franklin with her two dogs — and, already, she is spoiling Mainspring staff with her excellent baking skills.



Left: Sara Ruth Posey-Davis, Land Conservation Manager.

Right: Teresa Falzone, Finance Associate.

Photos by Fred Alexander

2019 Donors

Mainspring gratefully acknowledges the following contributors for their generous support.

Donors with names in **bold** have given for ten years or more.

\$5,000+

Adams, David
Adams, Kate
Anonymous
Balloun, Julie & Jim
Barnett, Beverly
Brouwer, Chris
Brouwer, JoAn
Campbell, Tim & Emily
Entegra Bank, A Division of
First Citizens Bank &
Trust
Jones, Fred & Jennifer
Lordi, Frank & Darlene
Macaulay, Lydia
Marsh, Tom & Elena
McKinney, Kenneth &
Diana
Nelson, Kent & Alice
Rasche, Larry & Kendra
Reilly, Wendell & Mary
Stanback, Brad & Shelli
Stanback, Fred & Alice
Stanback, Nancy
Strawn, Johnny & Pam
Taylor, Karl & Peggy
Thurman, Ronald & Judy
Walbolt, Sylvia
Whitmire, Steve
Woltz, Thomas

\$2,500 – 4,999

Anonymous
Bell, Griffin & Glenda
Black, Martha & Thomas
Byrd, Joan & George Rector
Dyar, Bill & Sally
Fisher, Don
Fleenor, Mike & Betsy
Franklin, Alice & Dennis Hawk
Green, Mike & Sydney
Haight, Ed
Haire, Phil & Connie
Harrah's Cherokee Casino
Resort
Hogue, Lynn & Carol

Leshaw, Dale & Gail
Mayer, Bob & Gil
Reinheimer, Susan & Greg Coyle
Taylor, George & Sharon
Youngblood, Karen

\$1,000 – 2,499

Adams, Patricia & John
Barnes, Steve & Cathy Ramos
Conover, Ken & Lynda Anderson
Dimmitt, Larry & Vevie
Equinox Environmental
Consultation & Design,
Inc.
Fromknecht, Ken & Laura
Galloway, Lee & Nancy Thompson
Gibson, Bill
Gladden, John & Sandra
Greene, Maria & Jim Kautz
Gregory, Clementine
Grove, Bill & Nancy
Grove, Judy & Bob
Hernandez, Cristina & Erik
Hunnicut, Jean & Ron
Kershaw, Nancy
Lanwermyer, Lou &
Barbara
Leatherman, Lisa
Meyer, Steve
Mullins, Greg & Stacy
Bredendieck
Murphy, Ken & Amy
Penland, Kelly & Lewis
Penland Contracting Co., Inc.
Polanski, Stan & Mary
Rainbow Springs Inc.
Rhem, John & Georgia
Riley, Warren & Marge Abel
Russ, Don
Salain, Rita & Bill Deck
Schumacher, Cynthia
Sherman, Dave
Shuman, Nina

Simonson, Adrienne & Paul Carlson
Stenger, Larry & Terri
Stork, James & Ginger
Van Teeckelenburgh, Andy
& Kathie
Vickers, Keith & Melanie
Wheeler, David
White, John & Mary
Leonard-White
Wiley, Nancy

\$500 – 999

Bates, Pete & Kris
Bennett, Rick & Debra
Boring, Lindsay & Kay Kirkman
Bruskin, Karen
Clark, Susan

Litchfield, Carol
Love, Jason & Jennifer
Meadors, Helen
Parker, Jerry & Judy Seago
Posey-Neumann, Joan
Preston, Ralph & Deborah
Thomas
Raby, Clark
Ramsey, Carol
Regnery, Russ & Helen
Reynolds, Pattie & Don
Smith, Ramelle & Mike
Southerland, Carl & Pam
Sullivan, Shea & Lynn
Syring, George & Gloria
Virtue, Janice & Dwight
Deuring
Wilde, Gus
Williamson, Bob & Mary



FEET OF NEW TRAIL BUILT AT GIBSON BOTTOMS

Dillard Bluegrass & BBQ
Festival
Fouts, Lucille
Garner, Jim & Brenda
Garrison, John & Lynne
Haight, Ned & Maria Braud
Hammett, Kristen
Hardaway, Sylvia
Hendricks, Kathy & Pete
Heywood, Dick & Gill
Johnston, Gilliam & Cathy
Morrow
Kelly, Martin & Terrie
Ladner, Robert & Sharyn
Landwehr, Doug & Barbara
Laseter, Ben & Stephanie

\$250 – 499

Allen, Mr. & Mrs. Richard
Austin, Jesse & Debbie
Beckman, John & Jane
Finneran
Booker, Ray & Katherine
Browning, Sally
Clinton, Barry & Patsy
Crawford, Marilyn
Curry, John & Grace
Dalsemer, Robert
Denson, Andy & Kelly Larson
D'Onofrio, Ralph &
Margaret

Franklin Garden Club
Gregory, Greg
Haight, Ann
 Harris, Russ
Harrison, Robbie
 Hilton, David
 Holmes, Tom & Florence
 Hubbard, Jerry & Patricia
 Huskey, Hope
Inman, Suzanne
Johns, Bunny
 Johnson, Jeff
Knoepp, Paul & Jennifer
 Lindstrom, Marcia & Fred
Moulthrop, Jeanette & Mark
Olson, Candy
 Parrott, Susan
 Pepper, Susan & Jonathan Bradshaw
 Phillips, Randy & Molly
 Purdy, Michael & Margo
Reynolds, Alton & Connie
 Roth, John & Nancy
Sargent, Hugh
Shatley, Ed & Jane
 Skeen, Marianne
 Stillwagon, Jill & Michael

\$1 – 249
 Adams, Laura
Anderson, Ronald & Linda
 Anonymous
 Asbury, Tom & Mary Ann
 Austin, Ann
 Barbour, Monica
 Barnes, Lee
 Beale, Ronnie & Sissy
 Beattie, William
Beck, Charles & Lorna
 Bent, Samantha
Berger, Lee
 Bick, Andrew & Kristin
Blaine, Hugh & Gaynelle
 Blanck, Heidi
 Blankenship, Sarah & Jack Smoot
 Bledsoe, Carolyn
 Bonner, Jim & Patty
 Borders, Judith & Montie
Bradshaw, Gary
 Breedlove, Terry & Sandy
 Breithaupt, Charlie & Kathy
 Brenner, Ron & Debra
 Broadwell, Barbara
 Brock, Dean

Cameron, Edmund & Delores
Cantrell, Bud & Alatha
 Carlson, Elena

Federico, Chris & Robert
 Fesenmyer, Kurt
 Fowell, Danna & David
Floyd, Richard



VOLUNTEER HOURS CONTRIBUTED IN 2019, ALMOST \$1.5 MILLION IN VALUE

Carson, Anna Jane
 Chevelles 66 Restaurant
 Chika, Arthur
 Christie, Paige
Clark, Joann
 Clifton, Kathy
 Cloer, Jeff
 Cochran, Robert
Coe, Susan
 Cogdill, Tammy
Contino, Bobbie
Coriell, Kay
Cousins, Sharon & Charles
 Coward, Renee
 Cowee Baptist Church
 Crawford, Emory & Martha
 Croft, Betty
 Cuckovich, Peter
 Culclasure, John Jr. & Sarah
 Curlee, Rock & Nancy
 Dalhouse, Deborah
 Davis, Daniel
 Davis, Kaley
Desmond, Dennis
 Diamond, Carol & Jo Ellen Wade
Dillard, Claudette
Dodson, Mary
 Duke Energy Foundation
Easley, Robert & Katherine

Forrest, Craig
Forrister, Jean Ellen
Foster, Steve & Pat
 Fussell, Tempé Lee
 Gernandt, Allyson & Bob
Gilliam, Kim & Lynda Mosen
 Ginn, Richard
 Glasgow, David & Terri
Glatzer, Maurice & Kay
 Goldsmith, James & Jill
 Gonos, Dave & Mary
 Goss, Jeffrey & Rosa
 Grant, Richard and Teresa
Greene, Vic & Janet
 Gregory, Jackie & Cindy
Grist, Sharon & David
Ham, Emerson
 Handley, Jud & Kim
 Harmon, Sue
 Harrison, Robert & Susan
Hart, Ron
 Hartle, Lee & Diana
Hawkins, Gene & June
 Hedden, David & Vicky
 Hendrix, Jim & Ramona
 Henson, Charles & Kathy
 Hess, Ed & April
Hill, Paula
 Hodgin, Jerry



FEET OF CATTLE FENCING VOLUNTEERS REMOVED FROM GREENWAY EXTENSION

Thomlinson, Pauleah & Mike Carruthers
 Upson, Doug
Willis, Wanda & Bruce Lockaby
 Wooton, Tim & Shari

Brooks, Mark & Shirlene
 Brown, Jane & Tom
Burdette, Sharon & Glenn
Byrne, Maggie & Eric
 Cabe, Jessie
 Calhoun, Pat & Sylvia

Holland, John & Brooks
Hubbs, Doug & Patti
Hughes, Judy
Hunter, Walter & Teresa
Hutchins, Brock & Patty
Hutchinson, Margaret
Hyder, Anne
Hyder, Brad & Ashley

Mack, Ann
Mad Batter Food & Film
Mandler, Suzanne
Marbut, Richard & Sara
Martin, Brent & Angela
Martin, Ray & Jane
McBane, Wendy
McCown, Walt



KIDS REACHED THROUGH MAINSRING'S EDUCATION PROGRAM

Jackson, Cherry
James, Katherine & Alan
Blumenfeld
Jarvinen, Phyllis
Jones, Don & Tamela
Jordan, Lenny & Jean
Juhlin, Frances
Kaye, George & Connie
Kearney, William & Marilyn
Kenney, Gary
Key, Barbara
Koebert, Cynthia & Susan
Montgomery
Kornegay, Burt
Krome, Lenor
Land, David & Shandon
Laseter, John & Suzanne
Lehman, Gail
Leister, Kim
Lewis, Keith
Lippy, David & Kim
Locascio, Glen & Elly Wells
Loeffler, Judith
Love, Polly
Lynn, Beverly
Macauley, Kimberly

McDowell, Howard
McLean, Will & Caroline
Meador, Eddie & Milissa
Meador, Jason & Kristen
Melvin, Richard
Midgett, Russell
Midgett, Steve
Miles, Vanessa
Miller, Edgar
Miller, Lulu & David
Miltner, Mike
Monar, Kelder & Heather
Moore, Regina
Moore, Sue
Morris, Ed & Barbara
Morris, Pat
Morse, Dan
Munday, Doris
Murphy, Pamela
Nantahala Learning Center
Navarro, Aaron & Rachel
Norton, Anne & Gary
Kauffman
Ochsenfeld, Michael
Ogburn, Blair
Olson, Janis

Owens, Ben & Hygie Starr
Patton, Myra
Perrigo, Sandra
Perry, Vic & Margaret
Poindexter, Robert
Posey-Davis, Sara Ruth
Powers, Becky
Preston, David
Pringle, Ross & Sarah
Budischak
Pritchard, Joseph & Paige
Pyron, Doug & Kathleen
Rabun Gap Chapter of
BREDL
Ralph, Edward
Ramsey, Joe & Theresa
Ramsey, Lee Ann & Bill
Ray, John & Alice
Rehling, Connie
Reid, Marilyn
Reisdorph, Tom & Sue Ann
Rhem, Will & Amanda
Ritchie, Bruce & Sue Ellen
Smith
Roe, Chuck & Charlotte
Jone-Roe
Rogers, Bob & Betty
Rogers, Philip
Russell, Janet
Sakowski, Carolyn & Alton
Franklin
Sanders, Jenny & Jeremy
Schmidt, Margaret
Schweizer, Louis
Scott, Bob & Nancy
Seelke, Francis & George

Setliff, Ed & Dorene
Sharp, Mike
Shelton, Ellen & Jim
Sill, John & Cathy
Smith, Dan & Charlotte
Weingartner
Smith, Jordan & Vanessa
Smith, Karen
Sobek, Chris
Sowerby, David &
Cynthia
Spagnoli, Nancy
Spencer, Gerald & Susan
Sperry, Paul
Staples, Phil & JoAnn
Stewart, Debi
Stiles, Everette & Elbie
Stiller, Micki Beth
Stinson, Idus
Stone, Mary
Stoneburner, Ann & Robert
Wyatt
Stork, George
Sullivan, Dave & Ellie
Sullivan, John & Dorothy
Suminski, Claire & Joe
Sunset Restaurant
Swain County 4-H
Swain County High School
Swank, Wayne & Roberta
Talbot, Virginia & Dean
Zuch
Tallant, Mack & April
Taylor, Laura
Taylor, Rick & Mary Jane
Tebault, B J



MUSSELS STOCKED IN CARTOOGECHAYE CREEK AND CULLASAJA RIVER (SIGN UP TO HELP US MONITOR THESE THIS SUMMER!)

Thompson, Cindy & Chris
 Tolbert, Thomas & Laurie
Traverse, Richard & Patty
Trevathan, Bob & Sandie
Tribble, Arthur & Lori
 Trinity Roofing & Supply
 Turner, Scharf
Tyson, Mark & Denise
 Upson, John
Van Horn, Bill & Sharon
 Vanhook, Soni
 Vaughan, Marty
Wade, Ilene & Scotty
Wallace, Gloria
 Watkins, Dan & Margie
 Weatherford, Cris & Charla
 Weresuk, Sarah & Andrew
White, Barbara
 Wiesmayer, Susan

Wikstrom, Judith & Pat
 Wilcox, John & Margot
 Wilde, Kathy
Wilkinson, Gary & Lynne
 Willoughby, Lynn
Wilson, Lynn
 Wooten, Toni & Rick
 Zimmerman, Bruce

Monthly Donors

Burdette, Sharon & Glenn
 Clark, Susan
 Cloer, Jeff
 Davis, Daniel
 Denson, Andy & Kelly
 Larson
 Desmond, Dennis
 Harris, Russ
 Hilton, David

Huskey, Hope
 Jarvinen, Phyllis
 Jordan, Lenny & Jean
 Kelly, Martin & Terrie
 Landwehr, Doug & Barbara
 Laseter, Ben & Stephanie
 Leatherman, Lisa
 Mack, Ann
 Meador, Jason & Kristen
 Murphy, Pamela
 Pepper, Susan & Jonathan
 Bradshaw
 Phillips, Molly & Randy
 Posey-Davis, Sara Ruth
 Russell, Janet
 Smith, Jordan & Vanessa
 Smith, Ramelle
 Spencer, Gerald & Susan
 Stork, James & Ginger

Suminski, Claire & Joe
 Taylor, Sharon & George
 Tomlinson, Pauleah & Mike
 Carruthers
 Weresuk, Sarah & Andrew
 Wilde, Gus
 Wilde, Kathy
 Willoughby, Lynn
 Wooten, Tim & Shari

In-Kind Donations

Fred Alexander
 Bob Appleget
 Bear Lake Reserve
 Black and White Antiques
 Blue Moon Elise
 Andrew Chastain
 Cherokee County (Sanitary
 Landfill & Sheriff's office)

In Honor of

Charlie Anders
 George Brown

Sharon Burdette
 Ralph Burnett
 Paul Carlson
 Rowan Adele Davis
 Dennis Desmond
 Kornegay Family
 Lisa Leatherman
 Jason & Jennifer Love
 Jason Love
 Mainspring Staff
 Lydia Macauley

Kathryn McGaw
 Dr. Bill McLarney
 Peter & Lee McLean
 Keldar Monar
 Ralph Preston & Deborah
 Thomas
 Ret. Col. Gene Musselwhite

Donor

Joann Clark
 John & Brooks Holland
 Buddy & Gretchen Titshaw
 Jill & Michael Stillwagon
 Lydia Macauley
 Lydia Macauley
 Joan Posey-Neumann
 Jill & Michael Stillwagon
 Burt Kornegay
 Debi Stewart
 Polly Love
 Anonymous Gift
 Bob & Gil Mayer
 Kimberly Macauley
 Mainspring Staff
 Steve Meyer
 Russ & Helen Regnery
 Chuck Roe & Charlotte
 Jones-Roe
 Hugh Sargent
 Adrienne Simonson & Paul
 Carlson
 Ann Stoneburner & Robert
 Wyatt
 George & Sharon Taylor
 Sharon & Charles Cousins
 Jill & Michael Stillwagon
 Will & Caroline McLean
 Deborah Dalhouse
 Kelly & Lewis Penland
 Blair Ogburn

In Honor of

Rita Salain

Rita Salain & Bill Deck

Schick children
 Mrs. Jessie M. Shaver
 Walton R. Smith & Annie
 Dee Leatherman Smith
 Dave & Cindy Sowerby
 Joyce & Jerry Starr
 George & Sharon Taylor

Sharon Taylor

Jim & Bev Upson

Phyllis Vance
 Charles Wallin & Diana
 Bellgowan
 Mark Wilson
 Robert Wyatt & Ann
 Stoneburner
 Karen Youngblood
 Our three grandsons

Donor

Walter & Teresa Hunter
 Lulu & David Miller
 Becky Powers
 Soni Vanhook
 Monica Barbour
 Sylvia Hardaway
 Gilliam Johnston & Cathy
 Morrow
 Vanessa Miles
 Terry & Sandy Breedlove
 Patricia & John Adams
 Clementine Gregory
 Ned Haight & Maria Braud
 Lydia Macauley
 Gus Wilde
 Wanda Willis & Bruce
 Lockaby
 Steve Barnes & Cathy
 Ramos
 Rock & Nancy Curlee
 Bob & Gil Mayer
 Jill & Michael Stillwagon
 Doug Upson
 John Upson
 Marty Vaughan
 Kelly & Lewis Penland
 Lisa Leatherman
 Lydia Macauley
 Mainspring Staff
 Hugh & Gaynelle Blaine

Chevelles 66 Restaurant
 Clark & Company
 Landscape Architect and
 Construction
 Drake Software
 Duke's Hideaway Marina
 Gallery 26
 Gooder Grafix
 H & H Sports
 Hanging Dog Valley
 Nursery
 Healing Connection
 Herbal Butterfly
 Jan's Needful Things
 Jem's Gems
 Judy Holland Art
 Law Offices of Ken
 Fromknecht P.A.
 Modern Quilt Guild of
 Franklin
 Mountain Office Systems
 Mountain Streams Real
 Estate
 Murphy Kayak Rentals
 Purplecat Networks Inc.
 Romantic Asheville/Kevin
 Adams
 Serenity Mountain Gift Shop
 Serenity Wellness
 Tallant Law Offices
 TekTone Healthcare
 Communications
 The Sequoyah Fund

Trudy's
 Urban Salon & Spa
 Bill Vespasian
 Waynes's Feed Store
 1040.com

Foundation Partners

Cherokee Preservation
 Foundation
 Community Foundation of
 Cherokee County
 Community Foundation of
 Clay County
 Community Foundation of
 WNC
 Duke Energy Foundation
 Z. Smith Reynolds
 Foundation

Agency Partners

EBCI Office of Natural
 Resources
 Coweeta Long Term
 Ecological Research
 Heritage Partners of
 Cherokee County
 Jackson County Soil & Water
 Conservation District
 Macon County Soil & Water
 Conservation District
 NC Clean Water
 Management Trust Fund

NC Department of
 Agriculture and
 Consumer Services
 NC Natural Heritage
 Program
 NC Wildlife Resources
 Commission
 Southwestern Commission
 Council of Government

Tennessee Valley Authority
 The Conservation Fund
 Town of Franklin, NC
 Town of Sylva, NC
 USDA Natural Resources
 Conservation Service
 US Fish & Wildlife Service



VISITORS TO MAINSPRING PROPERTIES IN THE LAST YEAR

In Memory of

Mary Baker
 Maude Bivins
 Monica Wall Beattie
 Fred Berger
 Bobbie Cuckovich
 Lucille Floyd
 Merritt Fouts

 Hannah, trusty Labrador
 Barbara Hazazer

 Randy Hooper
 Dorothy Houston Cox
 Riley Howell
 Joel Carl Jones

 Sally Kesler

Donor

Barry & Patsy Clinton
 George & Sharon Taylor
 William Beattie
 Lee Berger
 Peter Cuckovich
 Richard Floyd
 Elena Carlson
 Marilyn Crawford
 Lucille Fouts
 Gene & June Hawkins
 George & Sharon Taylor
 Heidi Blanck
 David & Vicky Hedden
 Trinity Roofing & Supply
 Rick & Debra Bennett
 Rita Salain & Bill Deck
 Kristen Hammett
 Anonymous Gifts
 Jerry & Patricia Hubbard
 Elena Carlson

In Memory of

Gene Lynn
 Steve Melton

 Amy Patton Miltner
 Jack Patton
 James Perrigo
 P. Thomas Posey
 Dianne Ralph
 Margaret Ramsey

 Dave Rehling
 Pete Shundich
 Walt & Dee Smith

 Virginia & Edward Sobek
 Harold & Carolyn Strader
 Auden Thistle
 Dick Wallace
 Nancy Wiley

Donor

Beverly Lynn
 Equinox Environmental
 Consultation & Design, Inc.
 Mike Miltner
 Tempé Lee Fussell
 Sandra Perrigo
 Joan Posey-Newman
 Edward Ralph
 Marilyn Crawford
 Joe & Theresa Ramsey
 Connie Rehling
 Robert & Susan Harrison
 John White & Mary
 Leonard-White
 Chris Sobek
 Lynn Wilson
 Laura Taylor
 Gloria Wallace
 Judith Loeffler
 Lee Ann & Bill Ramsey
 Francis & George Seelke

Other Partners

Abraham Baldwin
Agriculture College
AmeriCorps Project
Conserve
Andrews Middle
Catamount School
Cherokee Central
Conservation Trust for
North Carolina
Cullowhee Valley School
Eastern Band of Cherokee
Indians









First Explorers
Graham Public Library
Graham Revitalization
Economic Action Team
(GREAT)
Harrah's Cherokee Valley
River Casino-Code Green
Hayesville Middle School
Highlands Biological Station
Jackson County Summer
Camp
Jackson Early College
Land Trust Alliance

Murphy Business
Association
Murphy Middle School
Nantahala Learning Center
Native Fish Conservation
Area Partnership
Nikwasi Initiative
Qualla Arts and Crafts
Mutual
Rabun Gap Nacoochee
School
Revitalization of Traditional
Cherokee Artisan
Resources
Robbinsville High School

Southeast Unitarian
Universalist Summer
Institute
Southern Appalachian
Raptor Research
South Macon Elementary
School
Southwestern Community
College
Swain County 4-H
Swain High School
TRC Solutions
Western Carolina Summer
Camp
Winding Stair Farm Nursery

2019 Mainspring Finances

2019 Source of Funds

Individuals	\$659,499	55%	
Government Grants	\$264,500	22%	
Organization Grants	\$107,725	9%	
Program Services	\$75,743	6%	
Rents, Interest, Sales	\$53,821	5%	
Corporations/Businesses	\$20,330	2%	
Stewardship Fund & Land Sale Proceeds	\$9,963	1%	
Foundations Grants	\$2,870	<1%	
TOTAL	\$1,194,451	100%	

2019 Use of Funds

Conserve	\$744,800	48%	
Restore	\$196,048	13%	
Connect	\$314,657	20%	
Administration	\$182,703	12%	
Fundraising	\$108,860	7%	
TOTAL*	\$1,547,068	100%	

Pre-audit figures

* Amount released from restrictions and included in 2019 expense = \$334,500




M A I N S P R I N G

CONSERVATION TRUST

P. O. Box 1148, Franklin, NC 28744

Conserving the waters, forests, farms and heritage of the Upper Little Tennessee and Hiwassee river valleys in western North Carolina and northern Georgia.



 Printed on recycled paper

The Way Forward

Now more than ever, we are reminded how important our mountains and waters are to our physical, mental and emotional well-being.

As of press time for this report, Mainspring's public properties remain open for restorative and explorative time outdoors. All guidelines for safe distancing apply, and any updates will be communicated via social media, eNews and the website.

Of course, our conservation mission remains; it just looks a little different. Staff is working remotely, education has moved online, and, while we miss seeing you in person, we are confident in our ability to adapt to change in this ever-shifting world.

Years ago, our Board of Directors created sound financial strategies to protect and make careful, efficient use of your generous donations. While a pandemic was not an emergency they had anticipated, their preparations positioned Mainspring in a positive financial foothold, allowing us to continue our work and maintain our staff in spite of this current crisis.

We do recognize, however, that other local and regional nonprofits are experiencing an overload in demand for their services, while also facing short-term financial stress. As you are able, we encourage you to support those nonprofits as they address the immediate needs of those directly impacted by COVID-19.

That said, there will be a time this year when your support will be critical to Mainspring's forward momentum, and we cannot stress how grateful we are for your loyalty to our mission. Stay well.